

- Phase Three
- Issue One
- Dec. 2005

## Contents:

- **System Population**  
*2nd phase achievements*  
..... p2
- **The Historical Sites of Egypt**  
*The first publication of EAIS*  
..... p2
- **Cultural Resource Management Projects**  
*An Overview*  
..... p3
- **QuarryScapes**  
..... p4

*The Egyptian Antiquities Information System (EAIS), a pioneering project by Egypt and Finland, is now creating the first comprehensive register of all historical sites in Egypt to be used as a tool in site preservation and the safeguarding of the country's cultural heritage. The work of EAIS includes the creation of an up-to-date Geographical Information Systems (GIS) that combines official site borders, the collection of archaeological and historical data, and the evaluation of physical threats to sites and monuments, as well as revision of their registration status.*

# Egyptian Antiquities Information System

*The official GIS of the Supreme Council of Antiquities*

**Phasing-out** is the key word for the third phase of the EAIS project. The main task of the following 2-year period is to ensure the sustainability of the project after the hand-over to SCA in 2007. To be able to maintain the high levels of technical skill, it will be necessary to obtain part of our financial support from external sources to replace that of the Finnish Ministry of Foreign Affairs. The focus of the third phase will be on increased fund raising efforts and managerial training of the staff.

This will take place alongside renewed efforts to extend collaboration with foreign missions, and consolidations of co-operations with other departments within the SCA. We will further expand our governorate coverage and intend to publish some of our case studies. We now have well-functioning work procedures in place which will be analyzed and developed further. Thus training and institutional development will lead the way for EAIS to become a fully fledged independent GIS institute within the SCA.

Our **GIS** uses up-to-date computer tools to facilitate the linking of the location (digital borders) of SCA sites with their bilingual data that is stored in the data-base.

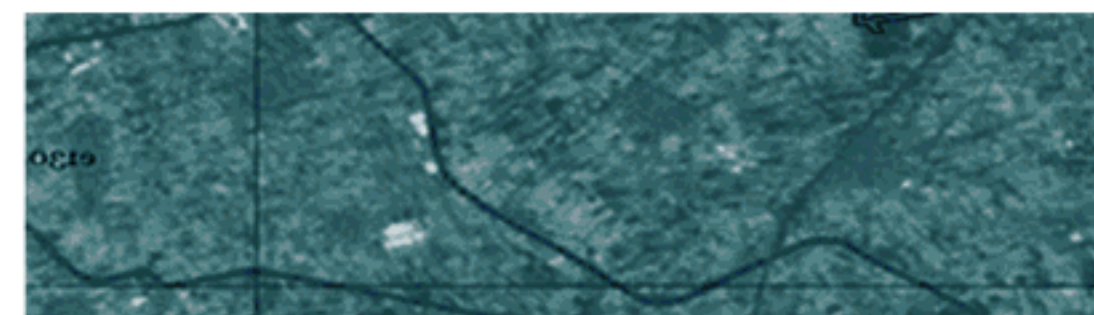
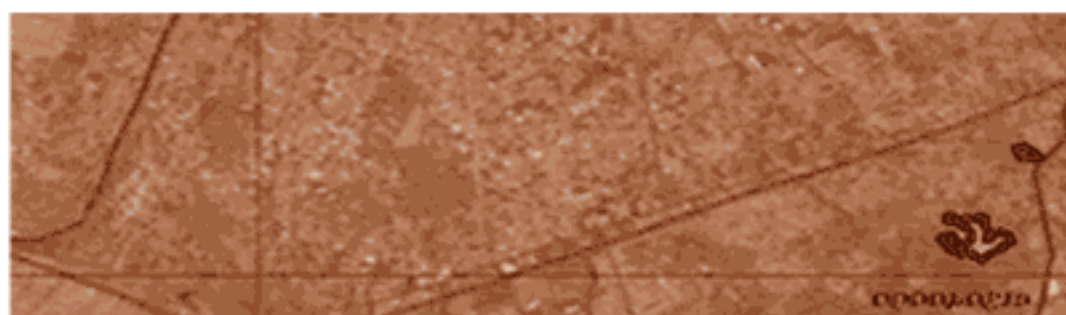
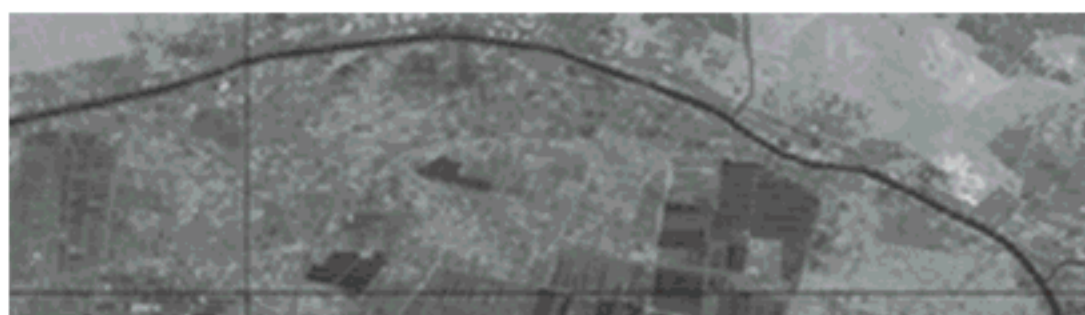


EAIS has recently launched its new web site. In addition to updated information about the progress of our work, the web site contains samples of maps, photographs and archaeological data for some of the governorates already completed by the project. For further information about any of the topics mentioned in this Newsletter, please visit the EAIS web site at:

[www.eais.org.eg](http://www.eais.org.eg)

You can also find all our previous Newsletters in PDF format on the website.





# System Population

".....The population of the EAIS system with geographical, spatial, archaeological, risk and reference data....."

The main task of EAIS is the **System population**, which aims to create a digital archive of SCA Archaeological Sites as a primary step towards Egyptian heritage protection.

Official archaeological site data - maps and legal documents - is acquired from Amlaak (the department within SCA that surveys and maintains official information on historical heritage sites). Further archaeological information is collected through research and site visits.

Currently, we are working on Ancient Egyptian sites in South Sinai, Bani Suwayf, Al-Wadi al-Gadid and Dumyat. As for Islamic/Coptic sites we are working on al-Isma'iliyyah, Port Said, North Sinai and ad-Daqahliyyah.

# Finalized Governorates

## Ancient Egyptian Sites:

Governorate	SCA Sites	Unregistered Sites
Ash-Sharqiyyah	110 Sites	16
Al-Isma'iliyyah	54 Sites	6
Port Saïd	17 Sites	3
North Sinai	29 Sites	15
Al-Fayyum	35 Sites	34
Ad-Daqahliyyah	48 Sites	61

## Islamic/Coptic Sites:

Governorate	SCA Sites	Unregistered Sites
Ash-Sharqiyyah	12 Sites	1
Alexandria	34 Sites	2

**Site visits** include risk assessment of sites and extensive photographic documentation. During the visits, Global Positioning System (GPS) points are taken to confirm site borders. All registered sites are visited.

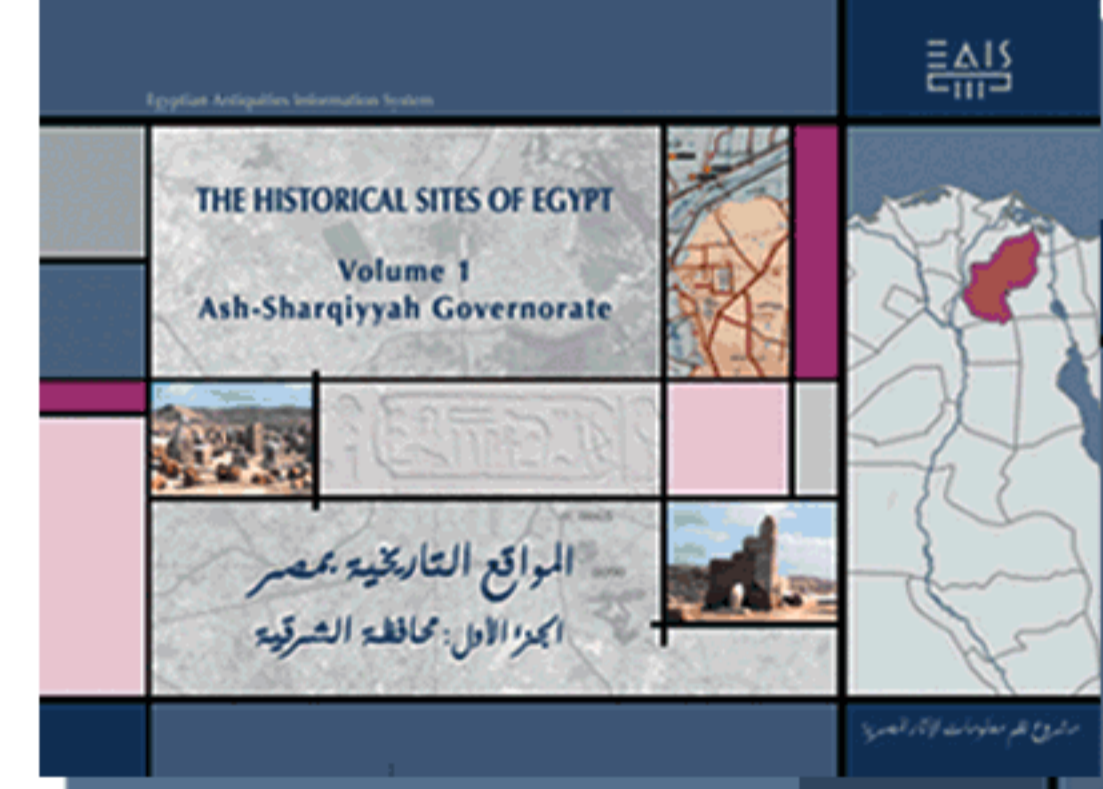
'SCA Sites' are divided into a number of different categories according to the degree of protection that has been assigned to them. Sites that are the **Property of the SCA** or **Under SCA Supervision** are managed and protected by the SCA. Additional categories have been developed by EAIS to clarify the legal status of sites not yet under SCA protection. These categories include **Under Registration Process**, **Under Registration Request** and **Site Under Research**. **Unregistered Sites** include sites that were identified through the research of the archaeology department or brought to our attention by missions. These sites are not officially recognized by the SCA and therefore have no legal protection.

# The Historical Sites of Egypt

"The Historical Sites of Egypt, Volume 1, Ash-Sharqiyyah Governorate" Cahier is now being published. This publication is one of the first attempts to provide a comprehensive coverage for the historical sites in Egypt with the aim to facilitate their protection and management. The Cahier contains data for 126 prehistoric, Pharaonic, and Graeco-Roman sites in the eastern Delta governorate of ash-Sharqiyyah. It is a combination of an A3-book and a CD Rom.

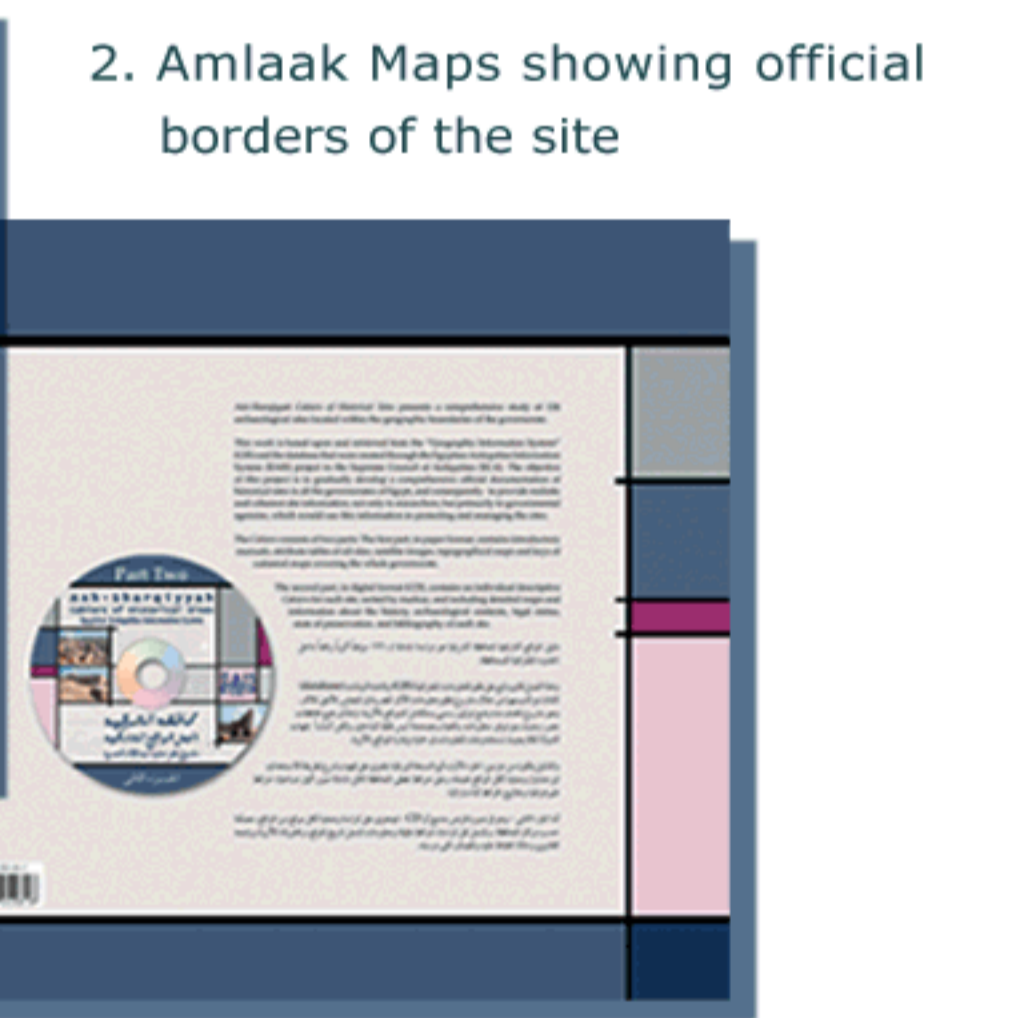
**In Part one**, the A3 Book (in paper format), ash-Sharqiyyah SCA archaeological sites are overlaid on a number of small scale background maps. The most important backgrounds are:

1. The LANDSAT 7 satellite images
2. The Military Survey Department (MSD) 1:250,000 topographical maps
3. Maps comparing SCA sites with a number of unregistered sites [courtesy of Manfred Bietak and the Egyptian Exploration Society (EES)]



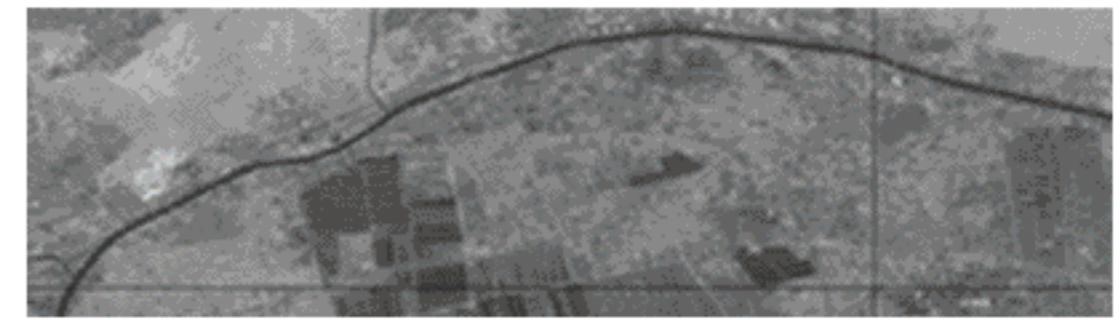
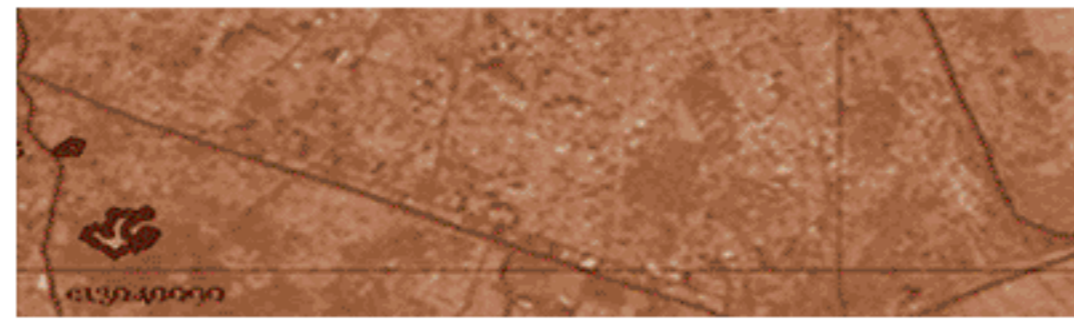
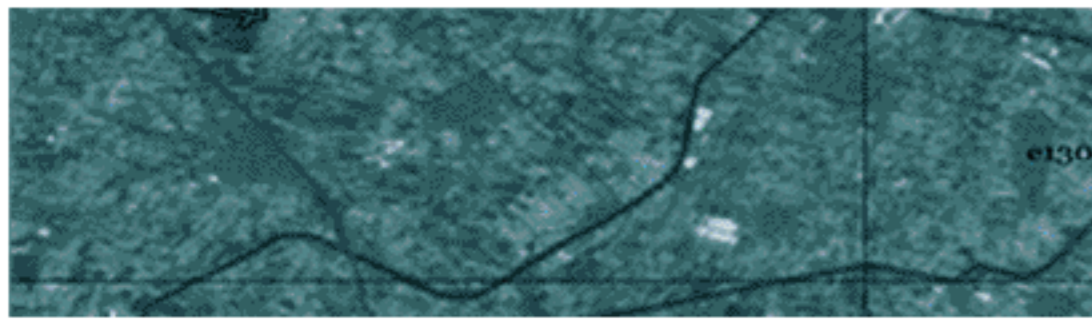
**As for Part Two**, the CD provides detailed site information (archaeological, legal and threat descriptions) and maps for 110 SCA sites, as well as basic information for an additional sixteen unregistered sites. The maps in the CD show the borders of the site overlaid on several background maps, providing specific topographical, geographical, or cadastral information. These maps include:

1. Vector Maps digitized from ESA 1:50,000 Topographical Maps



2. Amlaak Maps showing official borders of the site
3. Ministry of Agriculture Maps showing urban areas updated in 1985
4. ESA 1:2500 Cadastral Maps produced in 2000
5. ESA 1:50,000 topographical Maps

The Cahier will be published by the end of January 2006. To purchase a copy, please contact **EAIS** or the **American University in Cairo Press**.



# CRM Projects

**The pilot projects of the first phase played a great role in the foundation of the EAIS primary system. The results highlighted the deficiency of Egypt's current Cultural Resource Management (CRM) system.**

**As a consequence, more case studies were implemented during the project's second phase. Each case study, 8 in total, developed its own specific tools for SCA to document and protect various types of Egyptian cultural heritage.**

All CRM projects were done through national and international collaboration.

The aims and results of the case studies will be presented in greater detail in the subsequent quarterly Newsletters.



*Saïd Contemporary Heritage Case Studies* were initiated to find ways to include Islamic, Coptic and contemporary monuments in the EAIS database. As a bonus, the case studies consolidated the link between EAIS, the Islamic and Coptic sectors and their Amlaak. The *Rosetta (Rashid) Case Study* mainly aimed at drawing the attention to the current condition of cultural heritage of high value legally owned by SCA. The main issue was the lack of post registration procedures needed to manage the historical buildings, and to preserve them as a part of the urban fabric with the assistance of the local population.

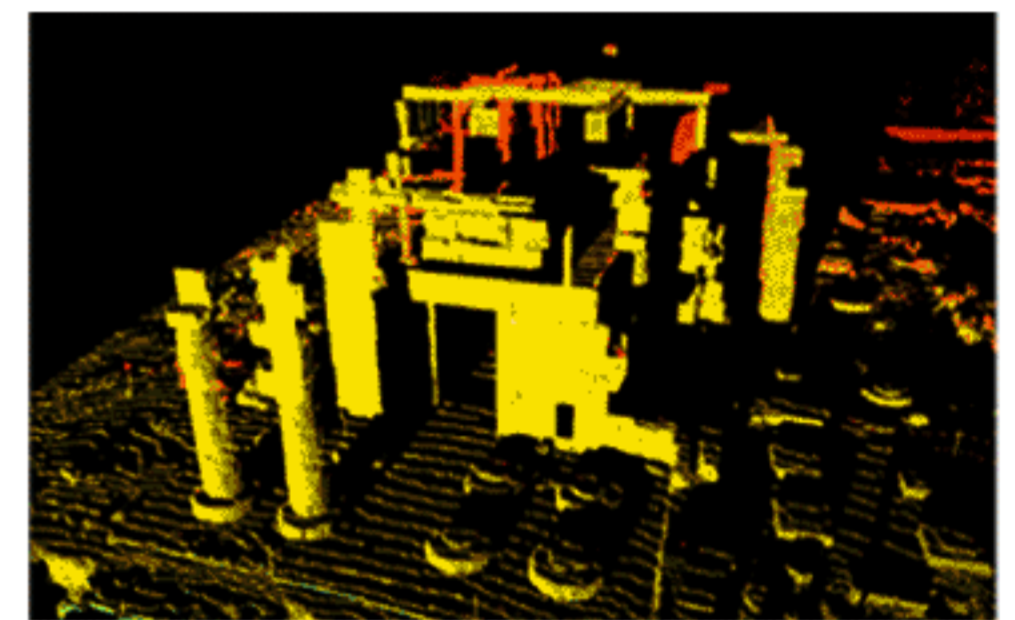


## Digital Documentation of Archaeological Sites

*Unprecedented cooperation and methods*

EAIS as SCA's GIS centre in collaboration with the Egyptian Survey Authority (ESA), surveyed 5 sites in Nubia as a first step for their registration as heritage sites. Such collaboration between the two governmental organizations and the methodology of land surveying is unprecedented to SCA. Similarly, the laser-scanning of the Ramesseum Temple in Luxor to produce

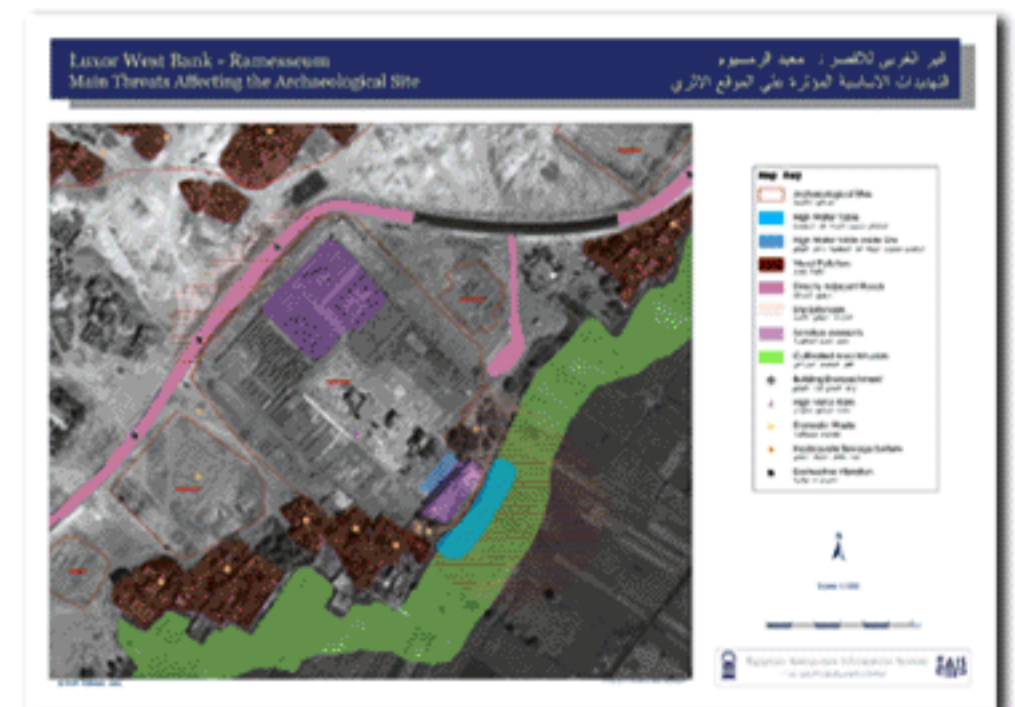
digital models for the temple involved ground-breaking methodologies for archaeological documentation in Egypt. The importance of EAIS as the GIS of SCA was acknowledged by the government in a direct request to create a comprehensive national digital map showing the location of all SCA sites. This map is the first of its kind and is being used in national development projects.



## Threat Identification

*Problems of locating official site borders to ensure accuracy of risk assessment*

EAIS created the first ever general risk assessment maps to list the threats and the abuse the historical area of Luxor is constantly subjected to. The maps help SCA to establish priorities for future intervention needed to improve site management.

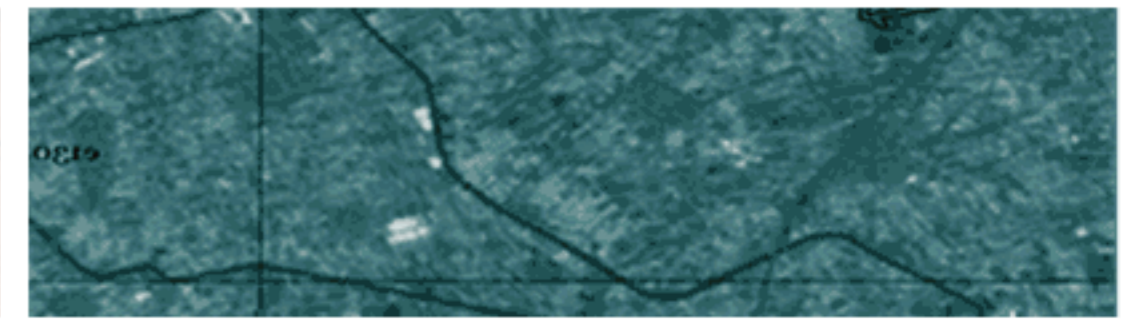
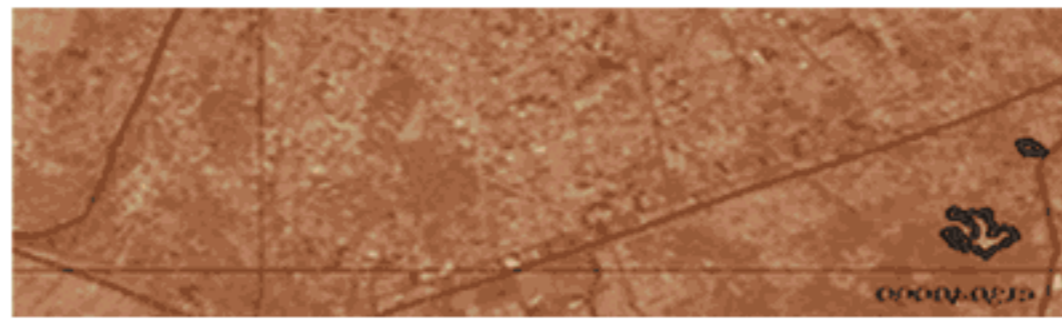


## Heritage Identification and Management

*Problem of site registration and expanding EAIS to cover non-Pharaonic heritage sites.*

Case studies of Alexandria, Port Saïd and Rosetta involved unregistered heritage sites which are not currently under SCA's protection and suffer from inadequate attention by both the authorities and the local population. *The Alexandria area rehabilitation project*, focused on 500 houses in the Turkish Quarter. The area was mapped and historical analysis prepared along with recommendations to register the whole area and to select the first houses for protection. *The Alexandria Islamic and the Port*

EAIS works to enhance **information exchange** between national and local authorities such as Amlaak (SCA Department of Properties and Survey), the Egyptian Survey Authority (ESA), and the General Organization for Physical Planning (GOPP) as well as the Ministries of Culture and Agriculture.

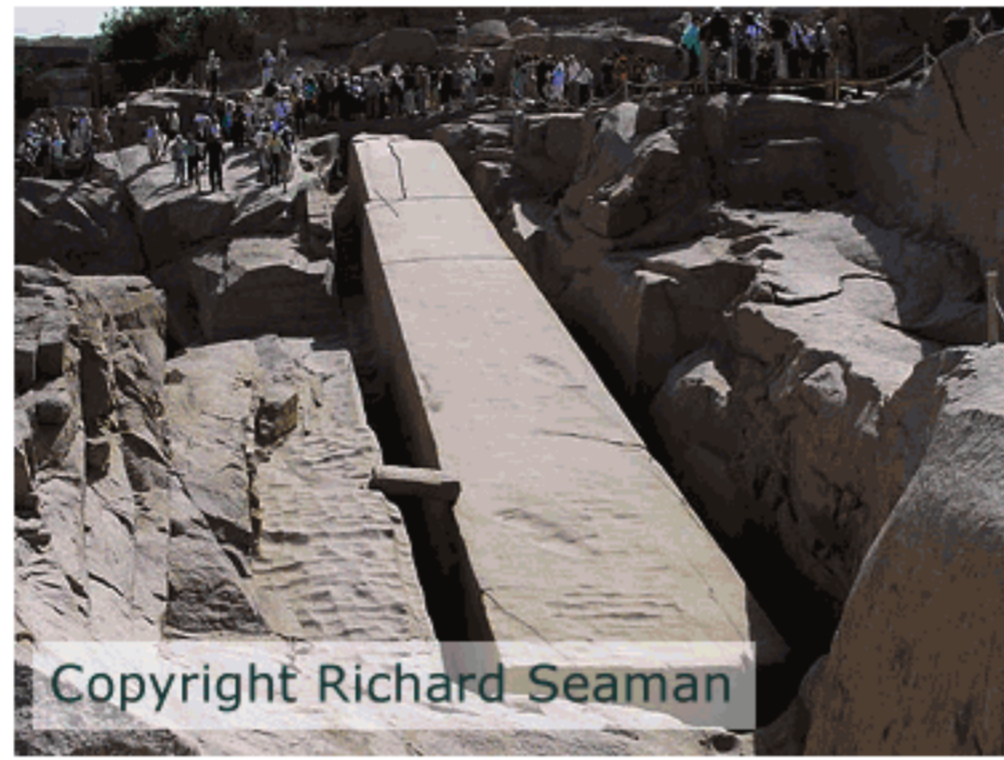


## QuarryScapes Field School in Aswan Conservation of ancient stone quarry landscapes in Egypt

'QuarryScapes' is the first collaborative project of its kind to draw together academic and other institutions in Europe with partners in Egypt, Turkey and Jordan, to focus specifically on documentation, conservation and heritage management of fragile quarry landscapes.

As a first step towards the protection of quarry sites in Egypt, five EAIS archaeologists and several regional SCA inspectors participated in the 'QuarryScapes' field school in Aswan on 19-24 of November. During the 'hands-on' field training course in the ancient silicified sandstone quarries of Gebel Gulab and Tingar, the trainees were introduced to the non-destructive methods of archaeological recording and GPS. The training stressed the importance of preserving historical sites and their archaeological features in their original context, and the

vulnerability and current threats facing ancient quarry landscapes in Egypt. 'QuarryScapes' presented its plans to develop practical and methodological guidelines for the conservation of such archaeological sites.



Copyright Richard Seaman  
**Unfinished obelisk in the Aswan granite quarry**

'Quarry landscapes can not only enhance our understanding of technological development and the lives of the non-elite in antiquity, but also provide rare insights into the political ambitions of an elite that drove resource exploitation to such heights. As heritage sites of enormous historical importance quarries have largely gone unrecognised, mainly due to poor documentation, which has consequently led to their current indiscriminate destruction from actions such as modern development and quarrying'. /QuarryScapes

The three year project, which commenced summer 2005, is co-ordinated by the Norwegian Geological Survey and funded through the EU Commission 6th Framework Programme. The project partners in Egypt are EAIS / SCA and NSCE (North South Consultant Exchange).

## IDLO SEMINAR in Cairo

**November 12 - 25**

The International Development Law Organization (IDLO) is an inter-governmental development organization that provides tools and skills to establish and maintain the rule of law within developing countries. It is supported primarily through voluntary contributions from governments, multilateral organizations, foundations and the private sector.

EAIS management participated in the two week IDLO seminar which was held in Cairo in November. Lectures and workshops were held in French and Arabic and the focus of the seminar was on the Protection of Cultural Property in the countries of the Mediterranean and related legal issues.

EAIS participation in conventions like this serves to establish a legal base for SCA to carry out heritage protection and site management. It also provides the EAIS staff with tools to perform legal comparative studies to improve the legal framework for Cultural Resource Management (CRM).



Copyright 1996-2005 by InterCity Oz, Inc.



**Egyptian Antiquities Information System**  
Supreme Council of Antiquities  
3 Al-Adel Abou Bakr St., Zamalek, Cairo  
Tel/Fax: (202) 735 0287  
Tel: (202) 735 0289  
e-mail: [eais@eais.org.eg](mailto:eais@eais.org.eg)  
Website: <http://www.eais.org.eg>