

## Contents

- **System Population**  
*World Heritage Centre*  
..... p2
- **The Historical Sites of Egypt**  
*At-Taruti Mosque*  
..... p2
- **Cultural Resource Management**  
*Rosetta / Rashid Contemporary Heritage (Part Two)*  
..... p3
- **Events**  
*QuarryScapes in Antalya*  
*EAIS at Amir Taz Palace*  
*Launch of EAIS Atlas*  
*Twinning*  
*SVB Meeting*  
..... p4

*The Egyptian Antiquities Information System (EAIS), a pioneering project by Egypt and Finland, is now creating the first comprehensive register of all historical sites in Egypt to be used as a tool in site preservation and the safeguarding of the country's cultural heritage. The work of EAIS includes the creation of an up-to-date Geographical Information System (GIS) that combines official site borders, the collection of archaeological and historical data, and the evaluation of physical threats to sites and monuments, as well as revision of their registration status.*

# Egyptian Antiquities Information System

*The official GIS Centre of the Supreme Council of Antiquities*



**Manal Nabil,**  
*Dissemination unit*  
*head since 2003*

Manal Nabil, head of the EAIS dissemination unit since 2003, graduated from the Faculty of Electrical Engineering (Department of Electrical Power and Machines) of Ain-Shams University. In 2001, she received a grant from the Ministry of Communication Information and Technology (ITI) to specialise in computer programming. Manal is a Certified Internet Webmaster and the EAIS website administrator.

The unit includes five other members: graphic designer Noha al-Kashef, media coordinator Waleed Yousef, editor Aleks Kalliomäki, publication coordinator Shahira Abd al-Karim and Sherif Ghazy who handles institutional collaboration.

The dissemination team deals with all the EAIS electronic and paper publications, such as the project-website, "Historical Sites of Egypt" series as well as the Newsletter, project brochures etc.

The main objective of the EAIS project's ongoing third phase is to increase the dissemination of its data by launching an interactive on-line service via the Internet, through workshops and the "Historical Sites of Egypt" Atlases. The launch of the first volume "Ash-Sharqiyyah Governorate" was celebrated at the Palace of Amir Taz in Cairo on the 5<sup>th</sup> of December 2006.

For more information contact Manal at [dissemination@eais.org.eg](mailto:dissemination@eais.org.eg)



## LAUNCH OF "HISTORICAL SITES OF EGYPT" ATLAS

**EGYPTIAN-FINNISH EXHIBITION**  
**6-11 DECEMBER 2006 AT**  
**AMIR TAZ PALACE IN**  
**CAIRO**

The event was organised by EAIS in collaboration with the Finns in Egypt Association and the Finnish Embassy in Cairo.

The EAIS exhibited a large collection of wall maps. The EAIS project and the Ash-Sharqiyyah "Historical Sites of Egypt" Atlas were presented by Mrs. Azza el-Shawarby and Dr. Naguib Amin. The exhibition, which also included jewellery designed by Nagwa Mahdy, photographs of Egypt and Finland taken by Päivi Arvonen, and lithographs by various Finnish artists, opened on December 5<sup>th</sup>.

Contact EAIS or AUC Bookshop to purchase a copy of the Atlas!

**ISBN 977-305-481-0 Price LE750**



## System Population

### WORLD HERITAGE CENTRE UNESCO

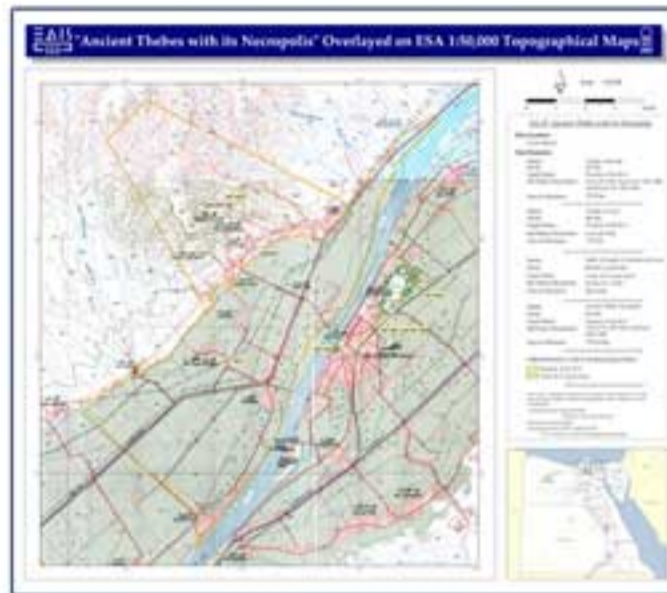
World Heritage Centre launched a retrospective inventory project in early 2006 to identify gaps in the files of World Heritage Sites listed between 1978 and 2004.

The ultimate goal of this project is to update the documentation of the Heritage Sites by requesting the state party organisations involved in heritage management, such as the Supreme Council of Antiquities (SCA) to provide the Heritage Centre with improved maps clearly showing the boundaries and protective buffer zones of the sites.

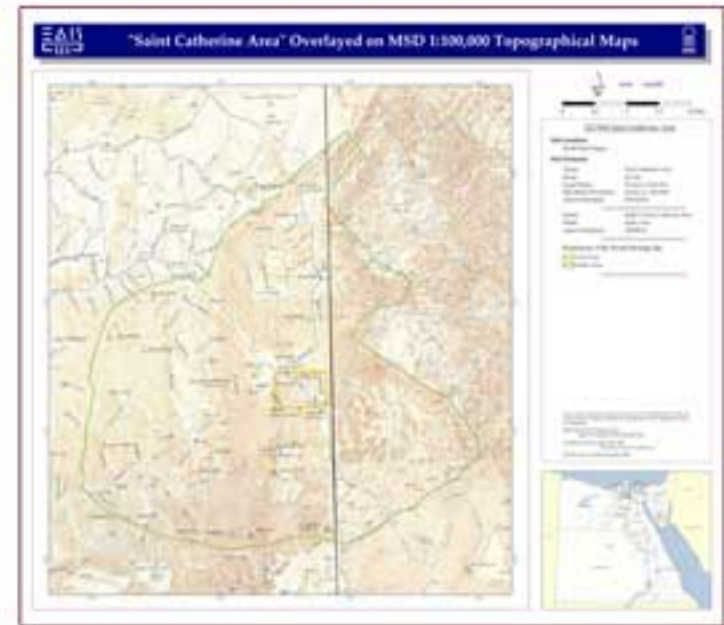
This will enable the Heritage Centre to contribute toward better administration, management and monitoring of the properties on the World Heritage list.

In Egypt, six archaeological sites (and their sub-sites) are included in the world heritage list.

- 1) Memphis and its Necropolis
- 2) Ancient Thebes with its Necropolis
- 3) Nubian Monuments
- 4) Islamic Cairo
- 5) Abu Mena in Alexandria
- 6) Saint Catherine Area in Sinai Peninsula



Boundaries of "Ancient Thebes with its Necropolis" overlaid on ESA 1:50000 topographical map



Boundaries of "Saint Catherine Area" overlaid on MSD 1:100000 topographical map

EAIS, the official GIS Centre of the SCA, provided the Heritage Centre with up-to-date maps for the SCA managed sites in Egypt.

For more information contact Rabab Abdel-Kader at [gis@eais.org.eg](mailto:gis@eais.org.eg) or visit the sites at UNESCO [whc.unesco.org/en/statesparties/eg](http://whc.unesco.org/en/statesparties/eg)

## Historical Sites of Egypt

### AT-TARUTI MOSQUE, ASH-SHARQIYYAH



At-Taruti Mosque

The at-Taruti mosque in the city of Faqus, Ash-Sharqiyyah governorate.

The mosque was inaugurated by King Farouk in 1938. Although fairly recent, this mosque is a good example of 20th century religious architecture. A school and the mausoleum of the founder, Ali Mustafa al-Taruti are annexed to the mosque.

This mosque is currently under the SCA registration process, meaning that its protection is still undecided. As in the case of so many other religious structures in Egypt, modern and unprofessional restoration and rebuilding threaten to obliterate original features of the mosque.



Decorated main entrance to the mosque

### SCA INSPECTORATES (TAFATEESH)

SCA inspectorates (Tafateesh) are present in every governorate in Egypt. The Tafateesh are responsible for managing and excavating archaeological sites and ensuring that inhabitants and land-use planners respect the legal boundaries of the sites. At the end of an excavation season, the Tafateesh and archaeological missions prepare reports in Arabic and English for the SCA headquarters in Cairo. These reports are an important data source for the EAIS database.





# CRM Projects

## ROSETTA CASE STUDY 2004-5 Part II

Proposals for Rehabilitation of Rosetta's Heritage and SCA Heritage Registration procedures.

*During the first part of the Rosetta case study (see Newsletter September 2006) the team from the universities of Bari (Italy) and Paris-Belleville identified threats to individual buildings and initiated work to raise awareness about the importance of Ottoman heritage in Rosetta. With the support of EAIS, the team created a documentation system for Rosetta's monuments and historical sites.*



Rosetta ships

### Safeguarding immaterial heritage

The aim of the second part in 2004 was to propose solutions to the heritage management problems in the city. The team composed two proposals for urban rehabilitation, emphasising the management of built and immaterial heritage as inseparable from urban development plans.

The first proposal involved the numerous old shipyards on the Rosetta Corniche. The exceptional skills in traditional carpentry, woodworking and painting still in use in ship-making represent important immaterial heritage unique to Rosetta.

The entire shipyard community with its skills and traditions is threatened to disappear as the authorities plan to relocate the activities away from the city. The proposal suggested a solution in which this shipyard micro-city could be integrated into the overall urban development plans of the city.

The second proposed two schemes for solving the problem of overcrowding caused by public transport. The idea was to limit the damaging effects of buses, such as exhaust fumes, vibration, crowds etc. by relocating bus-stops and redistributing the space in general in the historic city centre in order to create a more pleasant atmosphere for the inhabitants.



Rosetta Team

### Rehabilitation plan

In July 2005, the team of architecture/urban planning students from Paris-Belleville returned to Rosetta to develop the rehabilitation plans further.

The team met with the authorities involved in heritage management and urban development, as well as representatives from the local population. As a result of these discussions, the students identified a need to establish a local association with enough power to implement and maintain the proposed rehabilitation and management projects.

It was stressed that registration with the SCA should lead to the immediate preservation of the buildings as well as to the creation of long-term plans for their management.

Finally, they also presented recommendations for ameliorating current national



Brick Factory

dations for ameliorating current national and local laws and regulations concerning urban development and heritage, as well as highlighting problems with the current institutional framework.

The case study was concluded by a two-day work-shop in Rosetta presenting the urban rehabilitation proposals to the local authorities.

In November this year the new governor of Rosetta expressed his interest in implementing the rehabilitation plans.

For more information on the EAIS case studies, visit EAIS homepage at [www.eais.org.eg](http://www.eais.org.eg) or contact our CRM coordinator Sara Kayser at [archaeology@eais.org.eg](mailto:archaeology@eais.org.eg)

## UNDER REGISTRATION PROCESS

Under Registration Process is one of the legal statuses EAIS uses in its system for sites which local inspectorates have identified historically valuable.

It means that a ministerial registration decree is being processed to guarantee protection of a heritage site.

For more information legal issues, contact Elshaimaa at [elshaimaa.fathy@eais.org.eg](mailto:elshaimaa.fathy@eais.org.eg)





## QUARRYSAPES (QS) FIRST ANNUAL WORKSHOP ANTALYA, TURKEY, OCTOBER 15-17, 2006

EAIS team leader Dr. Naguib Amin and general manager Mrs. Azza Shawarby participated in the workshop in Turkey.

QuarryScapes is an international project formed under the Sixth Framework Programme of the EU which aims at documenting, presenting and preserving ancient quarry sites in the eastern Mediterranean.

The role of EAIS is to create a National Quarry Map for Egypt and to incorporate the sites into the GIS system developed at EAIS (QS-Work Package 7). This includes creating individual datasheets for each quarry and performing site visits to a selected number of sites. In addition to the National Map, detailed maps are to be produced for three major quarry sites in Egypt; Aswan silicified sandstone and Widan el-Faras basalt quarries in the northern Fayyum as well as the Khefren gneiss quarries in western Nubia.

During the workshop, the progress of each Work Package was presented and a

lecture on "Ancient limestone and sand stone quarries at risk in the Nile Valley" delivered by the key-note speaker, Professor James Harrell from the University of Toledo.

Participants also went on a fieldtrip to Sagalassos, one of the sites involved in the QS project. Sagalassos is currently being excavated by the Catholic University of Leuven and contains impressive Roman civic remains, including a nymphaeum, a theatre and industrial and domestic quarters. Within the site boundaries are several stone quarries, whose preservation and use is an important part of the research strategy of the site.

EAIS would like to thank all participants.

For more information contact

Mrs. Azza el-Shawarby at

[ashawarby@eais.org.eg](mailto:ashawarby@eais.org.eg)

or visit QS website

[www.quarryscapes.no/egypt\\_GIS.php](http://www.quarryscapes.no/egypt_GIS.php)

## EAIS IS NOW THE OFFICIAL GIS-CENTRE OF THE SCA

After six years of hard work and preparation, EAIS was finally recognised as the official GIS-Centre of the SCA.

The nomination was approved by the Central Agency of Administration and Organising last August.

The Centre is going to be under the direct authority of the Secretary General of the SCA.



## TWINNING



Sari Nieminen is a lecturer in Egyptology at the University of Helsinki from where she graduated in 2005. Currently, she is researching for her PhD on Deir el-Medina. In addition to her archaeological research work at EAIS, her assignment includes identifying long term twinning possibilities between EAIS and different institutions in Finland, such as the University of Helsinki. She works to enhance the cooperation between Finnish and Egyptian archaeologists, Egyptologists and GIS-experts.

For more information on twinning, contact Sari at [sari.j.nieminen@helsinki.fi](mailto:sari.j.nieminen@helsinki.fi)

## SUPERVISORY BOARD MEETING (SVB)

The EAIS Supervisory Board meeting was held on 26 September 2006 to discuss the progress of the project and its budget for the final year of the project phase. Cooperation with the World Heritage Centre (UNESCO), post-project phase twinning with Finnish students and experts as well as EAIS's self-sustainability after the complete hand-over to the SCA in late 2007 were on the agenda.

The meeting was lead by representatives of the SCA and Ministry for Foreign Affairs of Finland.

One of the main topics was the first EAIS publication, the Ash-Sharqiyyah Atlas and the upcoming Atlases of al-Isma'iliyyah and Port Said which are currently being finalised and will soon be on the market.

For more information on administrative issues, please contact [doaa.fawzy@eais.org.eg](mailto:doaa.fawzy@eais.org.eg)

## WELCOME TO EAIS PRESENTATION IN FINLAND!

*EAIS AND QUARRYSAPES*  
on 23 January 2006 at 6.30 pm  
at the University of Helsinki

address: Tieteiden Talo-building,  
6 Kirkkokatu st., Helsinki, Finland

Organised by  
The Finnish Egyptological Society (FES)

For more information  
EAIS [alexi.kalliomaki@gmail.com](mailto:alexi.kalliomaki@gmail.com)  
or  
FES [heidi.jauhiainen@helsinki.fi](mailto:heidi.jauhiainen@helsinki.fi)



**Egyptian Antiquities Information System**  
Supreme Council of Antiquities  
3 Al-Adel Abou Bakr St., Zamalek, Cairo  
Tel/Fax: (202) 735 0287  
Tel: (202) 735 0289  
e-mail: [eais@eais.org.eg](mailto:eais@eais.org.eg)  
Website: [www.eais.org.eg](http://www.eais.org.eg)