

## Contents:

- **System Population**  
Collaboration with Amlaak  
..... p2
- **Historical Sites of Egypt**  
Kawm Ushim  
..... p2
- **Cultural Resource Management Project**  
Gumruk Quarter  
..... p3
- **Events**  
..... p4

*The Egyptian Antiquities Information System (EAIS), a pioneering project by Egypt and Finland, is now creating the first comprehensive register of all historical sites in Egypt to be used as a tool in site preservation and the safeguarding of the country's cultural heritage. The work of EAIS includes the creation of an up-to-date Geographical Information System (GIS) which combines official site borders, the collection of archaeological and historical data, and the evaluation of physical threats to sites and monuments, as well as revision of their registration status.*

# Egyptian Antiquities Information System

*The official GIS Center of the Supreme Council of Antiquities*

## EAIS FUNDRAISING

*The Finnish Ministry for Foreign Affairs and the Finnish Environment Institute (SYKE) have provided EAIS with financial and technical support since the onset of the project. Over the last five years, EAIS has established a solid system of functioning with a highly skilled staff.*

The fund-raising effort is the first of its kind within the SCA organisation. The long term plan is to provide the SCA with a specialised, financially self-sustaining service and introduce capacities which are lacking in Egypt.



**Mme. Azza Shawarby**  
National Project Director of EAIS  
G.M. of the GIS center of the SCA

*"35 permanent staff work for EAIS today and the number is growing. The staff is relatively young with an age average of 30 years. They are all graduates from multiple disciplines: IT, GIS and database... architects, Egyptologists and administrators. We work with several institutions in Egypt and Europe and welcome collaboration to facilitate data exchange."*

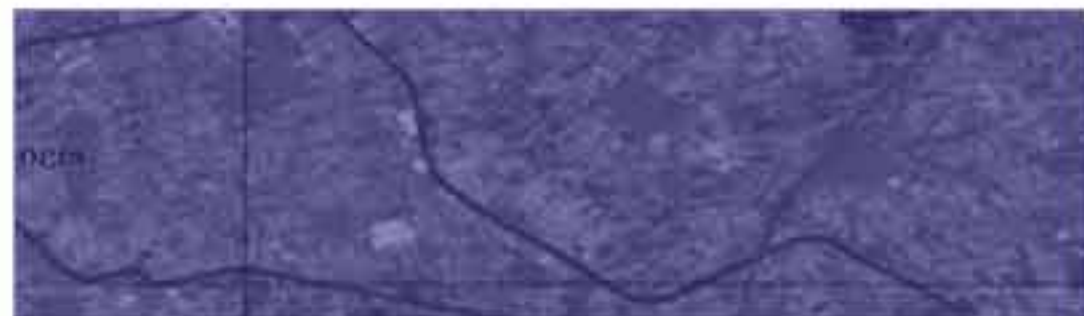
EAIS will become an independent GIS institute inside the SCA after the handover in 2007. In order to maintain the high level of quality, external funds are needed. Therefore, a fund-raising team has been put together. The team's first task is to identify and classify potential financiers; private, public and international organisations and NGO's who actively support development in the fields of cultural heritage protection and information technology. The team will then create procedures to handle call-proposals.

## DATA QUALITY CONTROL of EAIS DATABASE for ARCHAEOLOGICAL SITES

Data collection and design for the database are based on the same metadata (e.g the data format). Through data analysis, the metadata, is set. The data is revised by senior archaeological experts of EAIS and the SCA prior to database entry. Another revision is made before its publication. There are periodic quality checks on the data.

During the current, third phase of the project, the quality control procedures which are now based on the experience of EAIS database engineers will be developed to a standardised and documented system:

- Producing quarterly sheets for the progress of data entry,
- Setting fixed steps for automated data entry and creation of tools,
- Setting fixed formats for legal and GIS data to be used in automated data entry.



# System Population

## COLLABORATION WITH AMLAAK - ANCIENT EGYPTIAN SECTOR

Amlaak department is the main data source of EAIS Digital Archive of Archaeological sites. Collaboration with Amlaak's Ancient Egyptian Sector has been developed since the start of the project to facilitate the data acquisition methodology.

In order to improve Amlaak's system of documentation, EAIS is currently digitizing the Amlaak maps and related registers. The process has highlighted a variety of problems.

- Missing maps and documents,
- Multiple maps of varying scales for a site with sometimes contradicting border delineation,
- Amlaak registers which contain site data (location and surface area as well as decree and map numbers) extracted from official maps and decrees, are not updated regularly.

Official Amlaak maps, showing borders of archaeological sites, are based on

ESA\MSD background maps. Amlaak usually uses 1:2500 cadastral maps. For some areas of Egypt, these maps are not available and cadastral or topographical maps (1:5000 to 1:100,000) are used instead. For Al-Wadi al-Gadid, upon Amlaak's request, ESA produced maps displaying only the site borders delineated on tracing paper with relatively few or no reference points. Consequently, high level of error is expected.

The term '**Property of the SCA**' refers to the legal status of an archaeological site. A property can be transferred from Public Utilities (State) to Antiquities Utilities (SCA) in line with a Prime Ministerial decree. The sites administered by the SCA have the greatest potential for continued protection.

## COVERED GOVERNORATES

### Ancient Egyptian Sites

Governorate	SCA Sites	Unregistered Sites
Ash-Sharqiyyah	110	16
Al-Isma'iliyyah	54	6
Port Saïd	17	3
North Sinai	34	15
Al-Fayyum	35	34
Ad-Daqahliyyah	48	61
Bani Suwayf	26	46

### Islamic and Coptic Sites

Governorate	SCA Sites	Unregistered Sites
Ash-Sharqiyyah	12	1
Alexandria	34	2
Port Saïd	4	-

**ESA**  
Egyptian Survey Authority  
  
**MSD**  
Military Survey Department

# Historical Sites of Egypt

## KAWM USHIM - THE FAYYUM



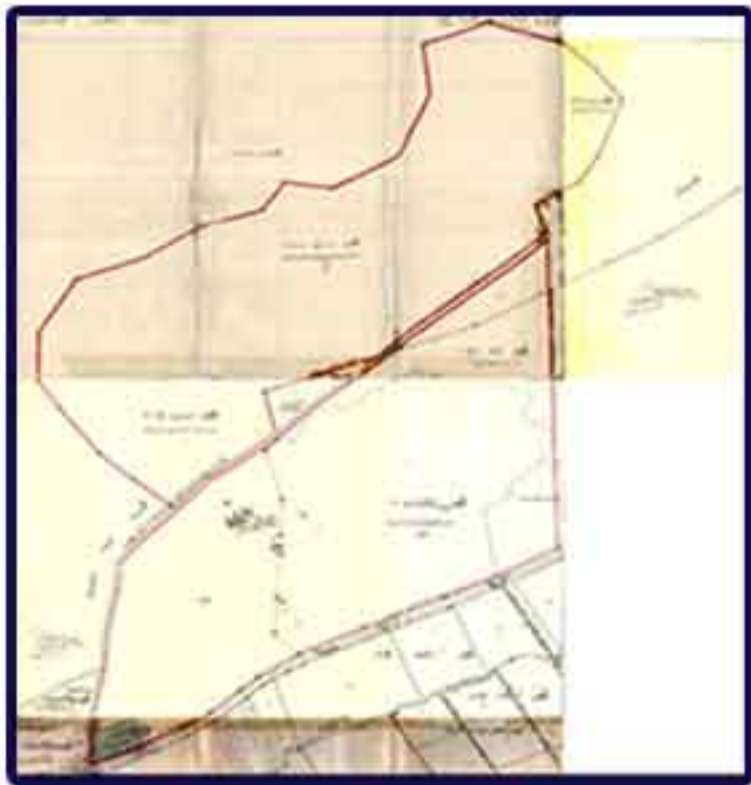
Like so many other sites in the Fayyum area, Kawm Ushim contains extensive Graeco-Roman remains and was known in antiquity as Karanis. It was established during the reign of Ptolemy II Philadelphus in the third century B.C. to house Greek and Macedonian mercenaries and to exploit the fertile land of the Fayyum. The settlement was expanded after the Roman conquest at the end of the first century B.C.

The site was last excavated by the SCA in the early 1990's. Archaeological remains include two large temples, several granaries, private dwellings, a bath, as well as

large amounts of administrative papyri. The rest of the site is covered with mudbrick and stone buildings, and the sandy surface is scattered with pottery and glass fragments.

There is great potential to develop this site for tourism, and a small museum and a campsite already exist. Currently there are many broken benches, fallen signposts and objects scattered on the ground that offer little encouragement for a visit.

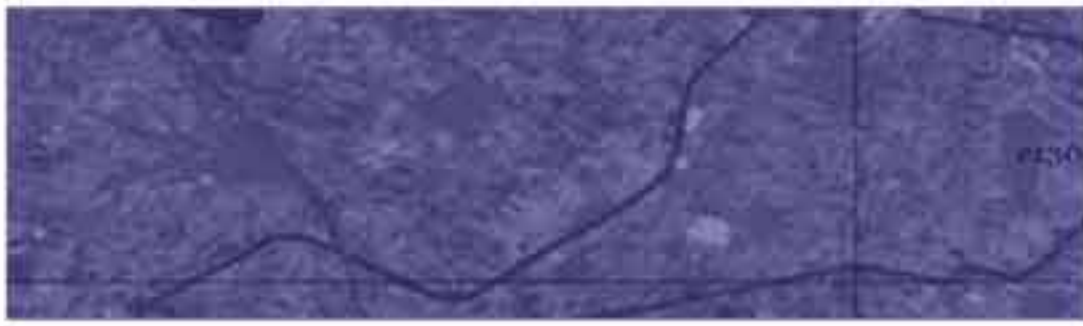
**Research** in the Archaeology Unit is initially conducted by a review of published material from surveys and foreign missions and official reports from SCA excavations. This data is then verified during the site visits. Even remains that were excavated only a few years ago will often be destroyed subjected to erosion, wind and water.



Amlaak map showing borders of Kawm Ushim



The site borders overlaid on Landsat satellite image



# CRM Projects

## GUMRUK - ALEXANDRIA

***Gumruk Quarter is located on the peninsula between the eastern and western harbours of Alexandria. Gumruk, or the Ottoman Quarter, was the heart of historic Alexandria before Mohammed Ali. The urban tissue of Gumruk is unique, representing Arab-Muslim cities in the 19th century. The stylistic variety of the buildings, showing Turkish, European and Arab influences represents Alexandria's cosmopolitan character and cultural richness. Characteristic Ottoman Sofa-houses and many functional, public buildings such as the hammam and wikala remain in good condition in the Quarter.***

At present, many of the Ottoman houses are purposefully neglected until they crumble into ruins in order to rebuild the area with buildings of much higher volume. The capacity of the local infrastructure is often ignored resulting in unacceptable living conditions. Appropriate exploitation of this heritage area, in harmony with its environment, could result in enhancing the local economy and the lives of the inhabitants.

Several institutional factors complicate the efforts to protect the Gumruk Quarter.

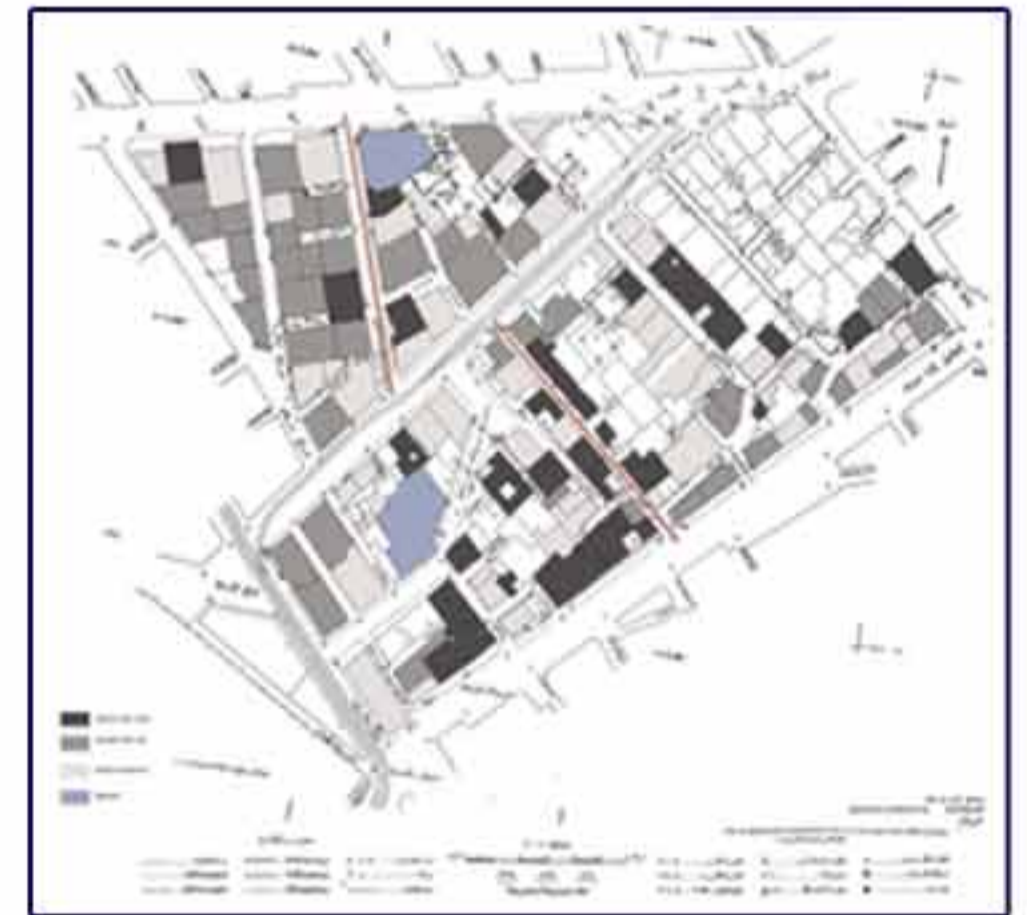
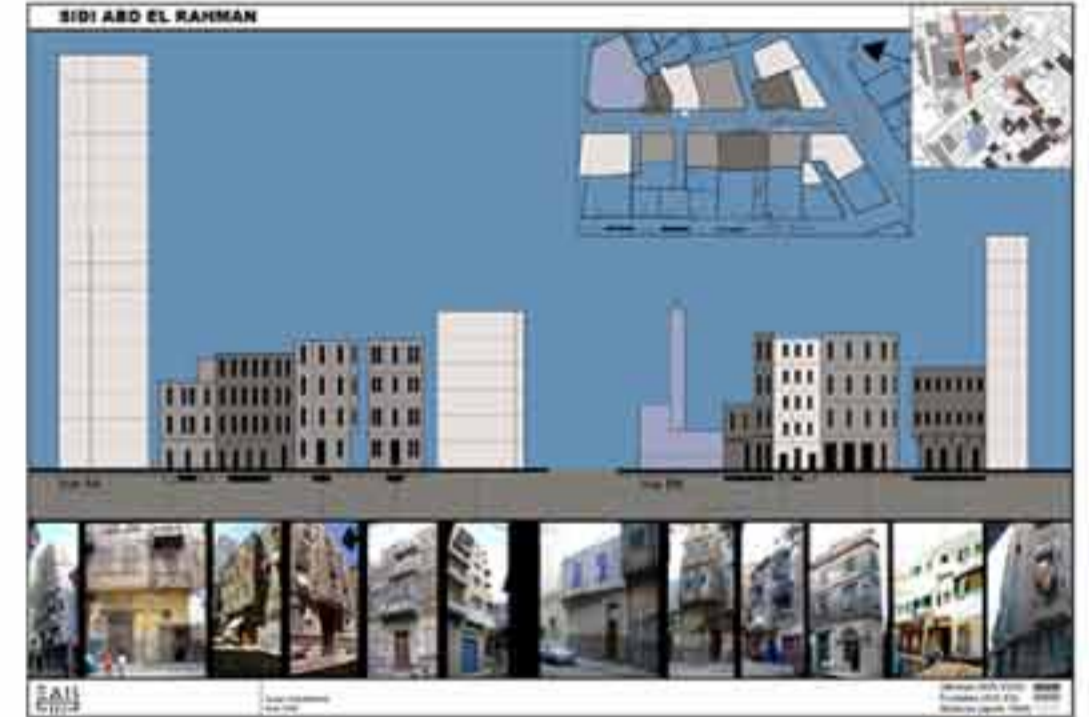
- The current 'Egyptian Antiquities Protection Law 117-1983' is not implemented,
- Due to the lack of resources and an adequate system of classification of heritage, Pharaonic 'monumental' sites usually have a priority over all other types of sites,
- Lack of heritage awareness among the general population and the authorities,
- The significance of historical urban sites and their potential in urban improvement is not fully appreciated,
- No financial support for property owners to maintain their buildings.



EAIS participated in a case-study, coordinated by the Cultural Heritage Department of the Senghor University in Alexandria, to develop a system for assessing the significance of historical urban sites. The system would provide a model enabling the SCA to recognise, document, protect and rehabilitate these sites. The Gumruk Quarter is characterised by an urban, domestic tissue with very few 'monuments' but which as an integrated whole forms a monument displaying an important phase in the history of Alexandria.

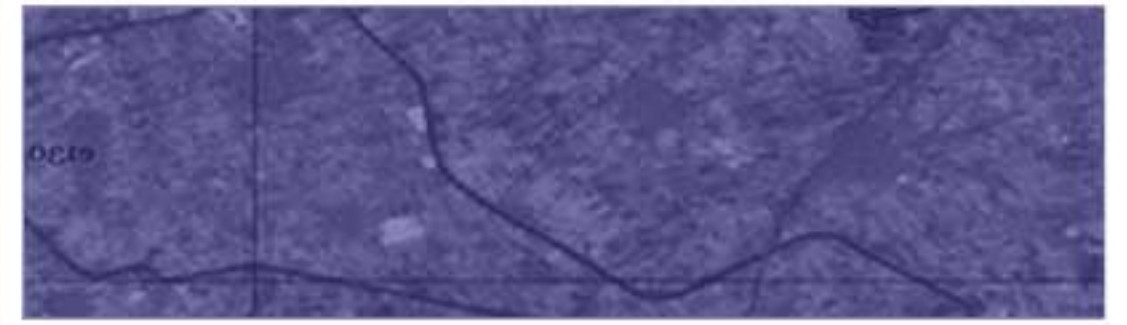
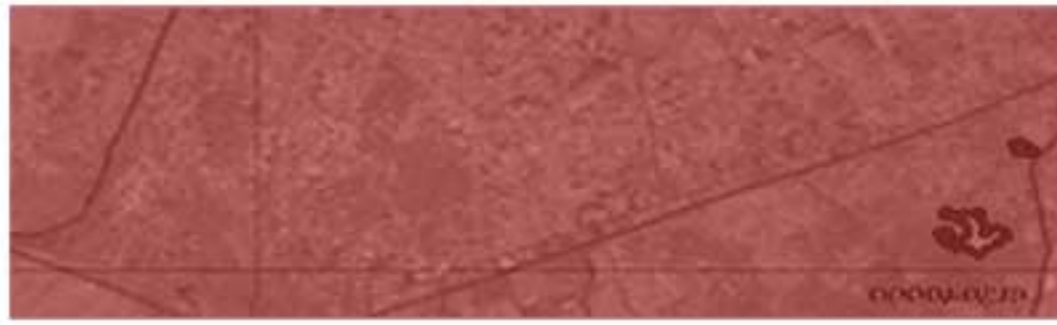


In summer 2005, EAIS conducted two separate field-surveys in the Quarter. The first survey developed a methodology to characterise the architectural typologies of the Ottoman buildings, and the other created a comprehensive inventory of five hundred houses with photos, data-sheets and maps of the area.



The data was then combined in the GIS of EAIS. The field-surveys were undertaken in order to complement the previous work of EAIS in the Quarter: In 2002, two hundred houses were surveyed for their state of preservation, architectural typology and volume. The final report addressed the importance of including historical urban sites and proposed a management scheme for the area. Meanwhile, a revision of the 'Egyptian Antiquities protection law 117-1983' was conducted.

During summer 2005, in collaboration with EAIS, the University of Senghor undertook a work-shop in the Quarter. A number of selected houses were surveyed by students of the Faculty of Fine Arts of Alexandria University. The students were supervised by the Cultural Heritage Department of Senghor. The results were used to compile a proposal for a humane, economic rehabilitation project.



## Events

### QuarryScapes Kick-Off 30 Jan - 01 Feb 2006

'QuarryScapes' is a collaborative project of eight partners in seven countries, bringing together a wide range of sciences for the documentation and protection of ancient quarry landscapes. The 3-year project is funded by the EU Sixth Framework Programme (FP6) and coordinated by the Geological Survey of Norway (NGU). The partners in Egypt are EAIS – SCA and the North South Consultants Exchange (NSCE).

The Kick-Off started with a field-trip to the ancient Widan al-Faras basalt and Umm es-Sawwan gypsum quarries in the Fayyum. In addition to presenting the extraordinary geological landscape and the quarries, the trip was planned to be an 'ice-breaker' for the project partners who met for the first time. At Widan, the participants witnessed ongoing destruction of the Old Kingdom basalt quarries by modern quarrying. There are extensive outcrops of good quality basalt which could be exploited without destroying archaeological remains. However, modern quarrying is concentrated on the archaeological area. Based on the quick survey during the field-trip, QuarryScapes created a map where the recent development can be seen. EAIS presented the new findings to the Governor of Giza with a request to relocate the modern quarrying.

In the opening speech of the conference in Cairo, Dr. Yahia Eid on behalf of Prof. Dr. Zahi Hawass - Secretary General of the Supreme Council of Antiquities, spoke of

the importance of QuarryScapes to the SCA, and praised its groundbreaking investigation concept.

The SCA lacks a comprehensive record and a system which would enable it to inform quarrying companies and land use planners about the location and archaeological significance of ancient quarry sites. One of the main objectives of the EAIS participation in QuarryScapes is awareness raising inside the SCA. In order to build up SCA's capacity to protect these sites, EAIS will design and produce GIS based thematic site maps to be used in conservation and management plans, and compile a map of ancient Egyptian quarries for the purpose of general land use management.

EAIS will carry out the design and layout for GIS tables/databases specifically applicable to visualising features of ancient quarry landscapes. The task is to compile and examine existing datasets, and develop them into defined hierarchical structures. The result will be applied in development of visualisation schemes for each group of the datasets, and then layouts are created showing the quarry datasets in relation to surrounding threats.



### 1st ANNUAL FORUM ON PROTECTING ARCHAEOLOGICAL SITES FROM MODERN RISKS 15 - 16 Feb 2006

The Forum assembled the Egyptian authorities involved in cultural resource management. The aim of the event was to encourage governmental officials, including the media, to work together in safeguarding Egypt's heritage. Sharing the responsibility and collaboration with other governmental institutions would help the SCA to protect Egypt's historical sites.

As a result, recommendations for future operations were outlined, including increasing work on raising awareness of the problem among the general population, and governmental and private sector institutions whose actions have an impact on the well-being of the sites.

EAIS participated in the conference as a co-organizer and together with the executive committee was involved in outlining the following recommendations.

- Implementation of the modified 'Egyptian Antiquities Protection Law 117-1983',
- Exploring new methods of documentation and monitoring threatened sites, using the GIS technology of EAIS,
- Strengthening the security on the sites.

#### Speakers

Prof. Dr. Zahi Hawass – Secretary General of the Supreme Council of Antiquities, Dr. Ibrahim al-Nawawi – Chairman, SCA consultant, Mme. Azza Shawarby – National Project Director of EAIS and G.M. of the GIS center of the SCA, Mr. Yasser Azab – General Manager of the SCA Department of Intrusions.



#### Egyptian Antiquities Information System

Supreme Council of Antiquities  
3 Al-Adel Abou Bakr St., Zamalek, Cairo  
Tel/Fax: (202) 735 0287  
Tel: (202) 735 0289  
e-mail: eais@eais.org.eg  
Website: <http://www.eais.org.eg>