

● Phase Three  
● Issue Six  
● Mar. 2007

## Contents

- **Database Upgraded**  
..... p2
- **The Historical Sites of Egypt**  
*Nabateans in Sinai*  
..... p2
- **Cultural Resource Management**  
*Port Said Case Study*  
..... p3
- **Events**  
*Arch unit at AERA*  
*EAIS in Helsinki*  
*Qurnah*  
..... p4

# Egyptian Antiquities Information System

*The official GIS Centre of the Supreme Council of Antiquities*

## SUPPORT EAIS

*The Finnish Ministry for Foreign Affairs has generously funded the project since its creation in 2000. By fall 2007, the Finnish financial support will have ended. EAIS is a fully integrated GIS department of the Council.*

*EAIS is seeking collaboration with organisations that could fund the work of the GIS department in order to:*

- *Continue the building of the GIS-database of Egypt's historical sites.*
- *Publish the subsequent volumes of the "Historical Sites of Egypt" – Atlas series.*
- *Conduct IT related projects in the cultural heritage field, such as digital documentation of archaeological objects or museum collections, remote sensing and survey of historical sites.*
- *Conduct joint site management projects which include heritage documentation and preparation of site management plans.*

## CONTACT

*For further information, please contact our Fundraising Unit*  
[wafa.belgacem@eais.org.eg](mailto:wafa.belgacem@eais.org.eg)



**Elshaimaa Muhammad Fathy, 30**

**Head of the Legal Unit of EAIS**

Elshaimaa graduated from the Faculty of Law of Cairo University. She was hired by the SCA's Management Information System (MIS) and has been with EAIS since the onset of the project in 2000.

She was trained in Heritage Inventory in the *Direction Regional des Affaires Culturelles* in France.

The Legal Unit of EAIS updates the official archaeological site registers of the SCA. The Unit's work is vital in the development of the legal framework of SCA's site management and protection.

The Unit verifies legal ownership status of SCA's registered sites by comparing the site records to the registers of the SCA's Property and Survey Department, Amlaak and to the more recent information in the Egyptian Survey Authority's (ESA), Sigel 'Ayni, state land records. All the legal data is available in the EAIS database and it is disseminated to the EAIS beneficiaries in various formats.

The Unit also follows-up the development of international laws governing management and protection of archaeological sites in order to ameliorate SCA's site protection and registration procedures. It has participated in various national and international projects concerned with legal aspects of site management. See EAIS web for case-studies:

**[www.eais.org.eg](http://www.eais.org.eg)**

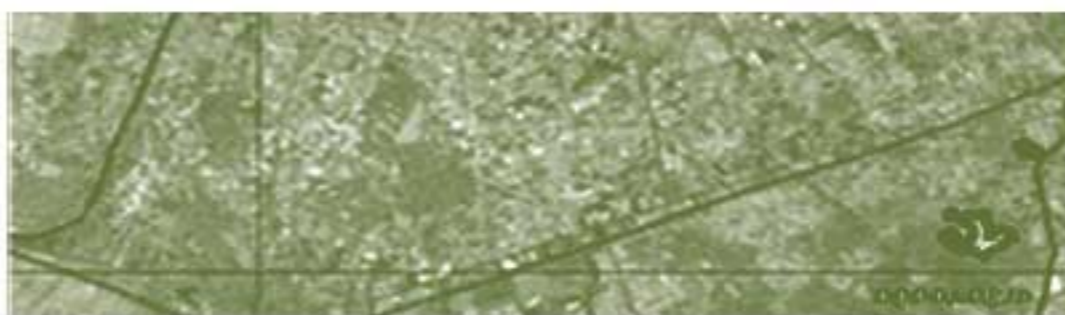
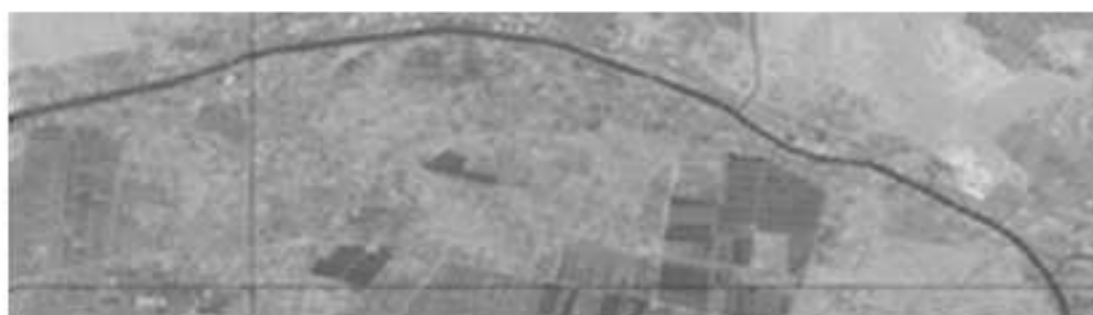
For more information, contact Elshaimaa [elshaimaa.fathy@eais.org.eg](mailto:elshaimaa.fathy@eais.org.eg)



## SCA LECTURES IN 2007

SCA LECTURE SERIES 2007 SEASON SCHEDULE		
MONDAY, JANUARY 15 • MARK LEYHER Discovering Giza's Lost City		
MONDAY, FEBRUARY 5 • BETSY DEVAN God and the Image of God: 'New' Statues of Amenhotep III		
MONDAY, MARCH 5 • FRANCESCO TRAMITTI Ten Years of Excavations in the Tomb of Harem		
MONDAY, APRIL 2 • GEZA FERRARI (ISLAMIC) The Kairwan Excavations at Bahariya, 1985 - 1987		
MONDAY, MAY 7 • DEBRAH MORGAN-REVES The Predynastic Sites of Adaima and Kom el-Khifan		
MONDAY, JUNE 4 • CHAMINDA KARIM (ISLAMIC) The Mosque of Amir Husayn: A Reconstruction		
MONDAY, JULY 2 • MUHAMMAD ANDOL-MARSHUD Excavations on the Ways of Horus: Tell Heboua and Tjeh		
MONDAY, SEPTEMBER 3 • KAROL MYALOWICZ A Necropolis from the Ptolemaic Period in Saqqara		
MONDAY, OCTOBER 22 • DIETER ARNDT Excavations of the Metropolitan Museum of Art, New York		
MONDAY, NOVEMBER 5 • LUI MATTEUCCI The Geophysical Survey of the Saqqara Necropolis		
MONDAY, DECEMBER 3 • JOSEF WEGNER New Excavations at the Tomb of Senwosert III at Abydos		
ALL LECTURES WILL BEGIN AT 6:00 PM. AMINO PARIK HALL SCA BUILDING, ZAAGLEK 731-8761/736-5645		

**Download Timetable**  
[www.eais.org.eg/index.pl/sca\\_lectures](http://www.eais.org.eg/index.pl/sca_lectures)



## EAIS DATABASE SOFTWARE UPGRADED

The EAIS database technical environment was upgraded to include another database created using more advanced softwares.

.NET 2003 and SQL server 2000 replaced the old MS Access 2000.

### Benefits of the upgrade

- Higher capacity: the database can now accommodate all the existing and future data resulting from the processing of Egypt's 27 governorates. The previous version of the database was 6 megabytes in capacity while the new one is 5 gigabytes.
- More user friendly
- Better management of bilingual data
- Better management of security features such as the user access control
- New software facilitates linking the database to users via the internet

[marwa.sadeq@eais.org.eg](mailto:marwa.sadeq@eais.org.eg)



[www.eais.org.eg](http://www.eais.org.eg)

## Environment and heritage protection

Essential for sustainable development  
**11 february 2007**

A lecture presented by IDLO's Egyptian member, EAIS, was a part of a preliminary meeting at the SCA to discuss the establishment of Egyptian IDLO Members' Association.

## EAIS COOPERATION PROTOCOL

EAIS has signed various agreements of cooperation with several national and international organisations in order to enhance the exchange of information on Egypt's historical sites. EAIS supplies its stakeholders and collaborators with updated maps showing site borders for the archaeological sites so that the different national development agencies can take the presence of the sites into consideration in their decision making. For more information on national and international collaboration, contact [sherif.ghazy@eais.org.eg](mailto:sherif.ghazy@eais.org.eg)



**Sherif Ghazy, 28**

**Assistant Project Director**

## System Population



Temple at Qasrawit, North Sinai

During the last quarter, EAIS survey teams visited several Nabatean sites in South Sinai. The work was made especially difficult due to the remote location and difficult access to the sites.

### Nabateans

The Nabateans were a number of related tribes from north-eastern Arabia. The tribes were active in Sinai from the 3<sup>rd</sup> century BC onward. Their most famous settlement is Petra in Jordan, which seems to have been the base of the tribes during the Roman period. However, their activi-

## Historical Sites of Egypt

### Nabateans in Sinai

ties stretched from Damascus to the south of Palestine, into the Negev Desert and Sinai and as far west as the Nile delta and the northern Arabia. The Nabateans wrote in Aramaic, the *lingua franca* in this region at the time.

In the south-western parts of Sinai, along the Wadis Mokkatab and Feyran and on mountain sides (Gabal Serbal) on the route to Mount Sinai, are a large number of Nabatean inscriptions and drawings.

Other remains left behind by the Nabateans consist of stone-circles from huts and cemeteries. Only in Qasrawit in northern Sinai have more substantial remains been preserved. Two temples have been excavated here. The earliest structure (Western Temple) dates to the first century BC and is laid out on a typically Egyptian plan, but with characteristic Nabatean elements such as betyls (stelae) in niches around the altar. The presence of a miniature alabaster altar outside the entrance has led scholars to believe the cult of the

goddess Kutba was practiced here.

The second temple (Central Temple) was built in a similar fashion to temples found in Petra and Wadi Rumm in Jordan. It was built in the 1<sup>st</sup> century AD as two nested square structures with a plaza in front. The centre of the building contained altars for sacrifices and was probably open to the sky.

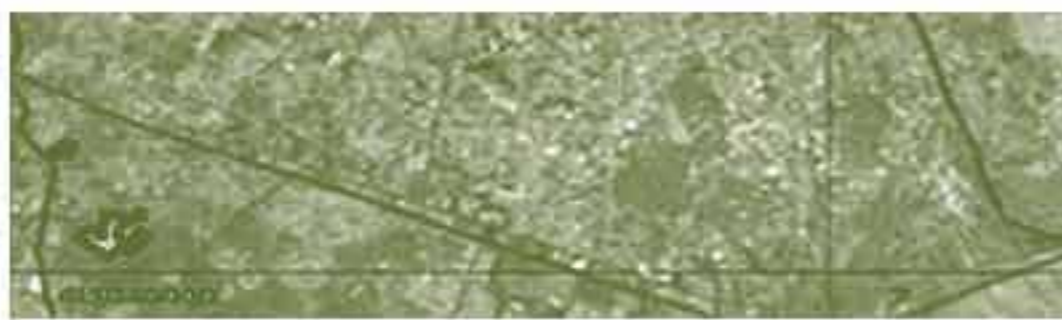
[sara.kayser@eais.org.eg](mailto:sara.kayser@eais.org.eg)

### South Sinai Team:

**Ahmed Rabia - Arch unit coordinator, Reda Ibrahim - Photographer, Walid Youssef - Site visit logistics, Mohammed El-Sayed - Driver**



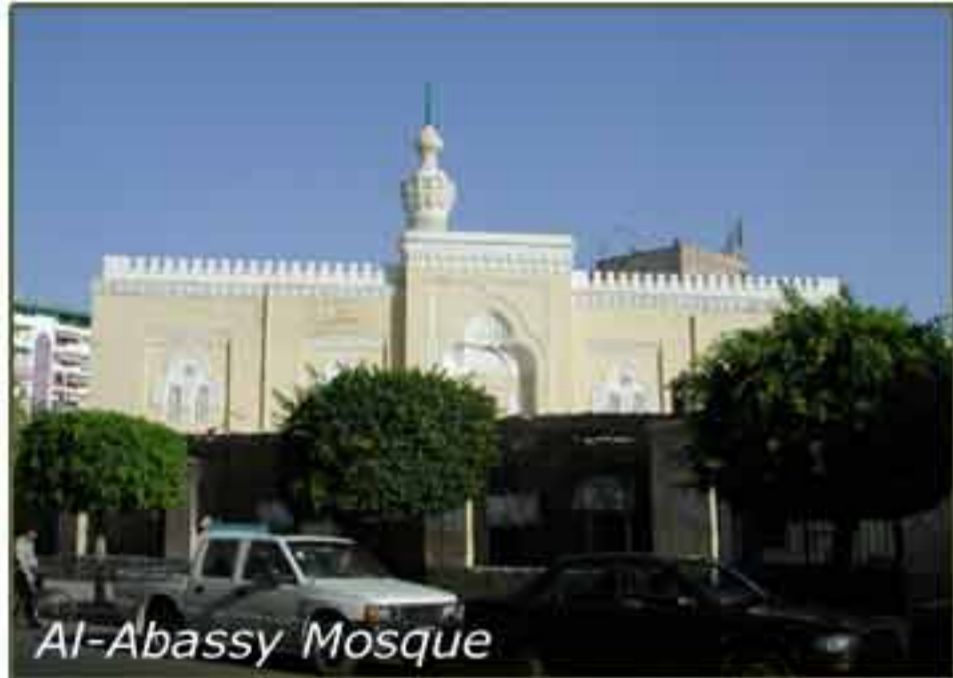
Petroglyphs, Wadi al-Maktab, South Sinai



# CRM Projects

## Port Said Case Study

The EAIS "Port Said Contemporary Heritage" case study was concerned with 19<sup>th</sup> and 20<sup>th</sup> century architecture in the city of Port Said, situated on the Mediterranean coast of Egypt. The study was a step in the second phase of the EAIS project's efforts to improve the SCA's data collection system and encourage closer collaboration with national and international authorities concerned with heritage protection.



Al-Abassy Mosque

### Objectives of the case study

1. Development of EAIS's own data collection system
2. Development SCA's data handling capacity, and enhance its registration procedures for protection
3. Liaisons creating between authorities, countries
4. Awareness raising
5. Site registration initiative
6. Propose regulations and changes in laws by analysis of the case-study data.

The primary result of this case study was an inventory of the contemporary architecture of Port Said accompanied with a list of buildings of particular heritage value and in urgent need of preservation. A very important objective of the study was to raise the awareness among local authorities of the importance of the 19<sup>th</sup> and 20<sup>th</sup> century architecture to the history and well-being of Port Said and provide them with solutions to the current problems of neglect and demolition.

### CEDHEC

The case study was initiated in 2004 as a joint venture between EAIS and the *Centre des Hautes Etudes de Chaillot* (CEDHEC), provided the case study with the methodology for the inventory and expertise in restoration of 19<sup>th</sup> and 20<sup>th</sup> century architecture.

In Port Said, the EAIS team wanted to

achieve the following:

1. Create liaisons between local and foreign authorities
2. Ensure registration of some of the valuable unregistered buildings or groups of buildings with SCA
3. Integration of the various laws and regulations concerning heritage protection and development
4. Propose regulations for protection by identifying building typologies to protect all categories of valuable buildings and control mass construction

### Progress

The study took place over two weeks in 2004 (May 28<sup>th</sup> -June 11<sup>th</sup>) and one week in May 2005. Most of the inventory was done in the initial stage in which several tours were made of the city to select the most important buildings and to take photographs.

The second stage involved follow-up of the work in Port Said with Alliance Francaise members. The current conditions of the selected buildings were examined and complementary notes and pictures were taken.



Simon Arzt

Following an initial investigation of the city and its urban fabric it was decided to focus the study in three districts divided according to the typology of buildings and use:

1. The Arab quarter (Al-Arab)
2. The European Quarter (Al-Sharq)
3. The garden city of Port Fouad

Besides 336 datasheets recording the buildings produced by the Ecole de Chaillot, the case study resulted in a number of other important outputs. Most crucial among these were the registration of Al-Abassy mosque and Villa Fernande and the protection of Simon Arzt from demolition.

The French Team elaborated on a plan for the rehabilitation of an old caravanserai situated along the north quay of the commerce basin. Among the buildings in this block are the remains of the Hotel

National, one of the first of its kind in Port Said, a warehouse from the 1920's and a Woolworth store.

sara.kayser@eais.org.eg

### Port Said Team:

Elshaimaa Muhammad - head of legal unit,  
Ahmed Taha - Islamic Amlaak representative

## Cultural Heritage Protection Horror-story

Unfortunately, despite all our efforts to halt the demolition of 19<sup>th</sup> and 20<sup>th</sup> century buildings in Port Said, two architecturally very important buildings were demolished between our first inventory of the city in May 2004 and our follow-up on the current condition of the buildings a year later (May 2005). The Quarantine building on Palestine road belonged to the Maritime and Quarantine Council and also housed (perhaps somewhat later) the Judges Club. It was demolished to be replaced by the Dreams Tower.

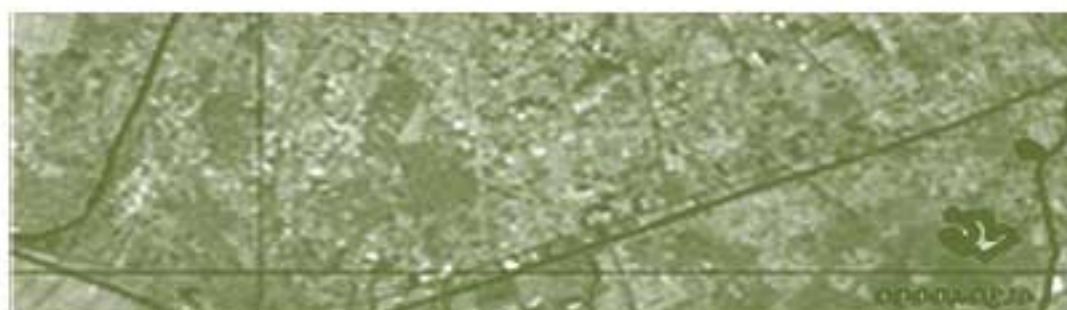


Quarantine 2004



Quarantine 2005

The British consulate at Place Férial was a building in neo-classical style adorned with a portico with pink granite columns, probably reused from a much more ancient building. This two storied building was demolished and replaced by a residence tower (Consulate Tower) on 11 floors, obstructing the view of the otherwise 4 floor buildings and disrupting the old fabric of the quarter. It is foreseen that the same will happen with other consulate buildings.



## EAIS ARCH UNIT AT THE LOST CITY OF THE PYRAMID BUILDERS 25 FEBRUARY 2007

In addition to regular training given to EAIS staff by external specialists of various fields, the EAIS Archaeology Unit organises internal training sessions for its team. Every week, a member of the team presents a short essay on a topic related to Egyptian cultural heritage; ancient, Coptic or Islamic. The training programme includes monthly outings during which the team makes a field-trip to a museum, excavation or a partner organisation.

The Archaeology Unit visited the AERA excavation directed by Dr. Mark Lehner, *the settlement of the pyramid builders*, by the Giza Pyramids. The Unit would like to thank all the AERA Egyptologists and especially Dr. Mohsen and Mrs. Ana Tavares for the extensive and most interesting tour around the site!

For more information on the AERA excavation, visit [www.aeraweb.org](http://www.aeraweb.org)



*In front of a partially reconstructed Old Kingdom house in "Eastern Town" Back: from left: Dr. Ana Tavares (Assistant Field Director, AERA), Aleksi Kalliomaki (editor, EAIS), Dr. Mohsen Kamel (Field Director, AERA), middle: Silvana John (researcher, EAIS), Sheimaa Fouad (Islamic Unit Head, EAIS), Sari Nieminen, Tanja Alzheimer (researchers, Helsinki University-EAIS), Front: Petri Virtaniva (researcher, Helsinki University-EAIS), Sara Kayser (Arch Unit Head, EAIS)*

## QURNAH

In an effort to record as much as possible of the unique architecture and the traditional social fabric of the village of Qurnah, on the west bank of Luxor before the last house was to be demolished, EAIS, in collaboration with *Ecole National Supérieure d'Architecture de Paris la Villette*, the SCA Site Management Centre and the SCA Inspectorate on the Luxor west bank, performed a two week survey of the area.



*Qurnah village overview*

In addition, the team prepared plans and drawings of other villages on the west bank to investigate the relationship between monuments and their surrounding habitations.

Further research is currently underway in France and it is expected that some of the architect students will return to Egypt this month to complete the mapping and drawing.

[naguib.amin@eais.org.eg](mailto:naguib.amin@eais.org.eg)

## EAIS-QUARRYSAPES IN HELSINKI, FINLAND 23 JANUARY 2007



QuarryScapes is a multi-national, EU 6<sup>th</sup> Framework funded project aiming at better protection of ancient quarry landscapes in the eastern Mediterranean [www.quarryscapes.no](http://www.quarryscapes.no)

EAIS editor, Aleksi Kalliomaki presented EAIS's work on the QuarryScapes project in Helsinki. The lecture was organised by the Finnish Egyptological Society (FES). EAIS would like to thank the Society and especially Dr. Jaana Toivari-Viitala at the Department of Asian and African Studies of Helsinki University for the invitation as well as for her efforts in establishing the collaboration between EAIS and Helsinki University.

For more information on the Society, visit [www.egyptologinenseura.fi](http://www.egyptologinenseura.fi)



## EUROMED HERITAGE – RMSU EAIS IN PROJECT DESIGN TRAINING ROME 20-23 MARCH 2007



EAIS editor Aleksi Kalliomaki and fundraiser Wafa Belgacem participated in the Project Design-training course, organised by Regional Management and Support Unit (RMSU) / Euromed Heritage at Istituto Centrale per il Catalogo e la Documentazione (ICCD), in Rome. EAIS would like to thank RMSU and ICCD staff and specially the fantastic trainers; Valerio Levi, Roberto Carpano and Cecilia Chiapero for the course.

More on RMSU - Euromed Heritage and the partners, please visit: [www.euromedheritage.net/en/rmsu/about/rmsu.htm](http://www.euromedheritage.net/en/rmsu/about/rmsu.htm)

## QUARRYSAPES (QS) AT EAIS, 4 MARCH 2007

A meeting was held at the EAIS with QuarryScapes coordinator Tom Heldal (Norwegian Geological Institute NGU) and Dr. Elizabeth Bloxam (University College London) to assess the progress of QS WorkPackage no. 7 assigned to EAIS. EAIS participation in QuarryScapes is to explore practical methods for optimising design and production of GIS products especially suited for the management of ancient quarry landscapes.



**Egyptian Antiquities Information System**

Supreme Council of Antiquities  
3 Al-Adel Abou Bakr St., Zamalek, Cairo  
Tel/Fax: (202) 735 0287  
Tel: (202) 735 0289  
e-mail: [eais@eais.org.eg](mailto:eais@eais.org.eg)  
Website: [www.eais.org.eg](http://www.eais.org.eg)